

ABC BOATS NV

Yacht Id # 79756



LOA:	80' (24.38 m)	Year:	Mfg-2003 Model-2003
Beam:	21'7" (6.6 m)	Mfg:	AZIMUT
Draft:	Min 5'11" (1.8 m)	Model:	Carat
Speed:	27 knots / 32 knots	Type:	Motor Yacht
Location:	Curacao, Florida, United States		Fly Bridge with Cockpit
		Price:	2,275,000 USD

Additional Specifications For Yacht Id # 79756:

LOA: 80' (24.38 m) Mfg. Length: LWL: LOD: Beam: 21'7" (6.6 m) Draft: Min 5'11" (1.8 m) Hull Mtrl: Fiberglass Hull Cnfg.: Modified V-Hull Hull Designer: Stefano Righini Deck Mtrl: Disp: 125827 (57074.8 kg) Ballast Weight: Ballast Type: Range: 450 Int Designer: Ext Designer: Fuel Cap: 880 g (3330.8 l) Water Cap: 175 g (662.4 l) Holding Tank: Flag: Netherlands Antilles Classifications: R.I.NA Class Type: MCA: ISM: Location: Curacao, Florida, United States	Year: Mfg-2003 Model-2003 Mfg: AZIMUT Model: Carat Type: Motor Yacht Top: Fly Bridge with Cockpit With Flybridge Open W/Bimini Speed: 27 knots / 32 knots Engines: 2xCaterpillar 3412E 1420 HP Engines Year: Staterooms: 4 Sleeps: 8 Heads: 5 Crew Quarters: 1 Crew Berths: 2 Captain Cabin: No Price: 2,399,000 USD
---	---

Remarks

- Recent \$180,000 Price Reduction!
- 100% maintained and in excellent condition.
- Recent Haul-Out (December 2008)
- New Bottom Paint Job (December 2008)
- Props Cleaned and Painted with Prop Speed (December 2008)
- New Exhaust on Main Caterpillar Engines (March 2008)
- New Exhaust on One (1) Generator (March 2008)
- New Varnish Caprail (March 2008)
- More than \$10,000 in spare parts, very professional provision list for heavy use, also in isolated areas.
- Unique office in Master Bedroom, Double Bathroom (double vanity, double toilet and separate marble sinks, for him and her, Separate Walk-in Closets.
- Over \$15,000 in fine Portofino art on board.
- Note the following remark by Azimut's Director of Warranty: "This is one of the most

beautiful and best maintained Azimut 80s."

- Over \$75,000 in furnishings featured by Marty A. Lowe Interior Design.
- VAT status: not paid

Details

- Draft from lower tip of propellers: 5ft6in- Light displacement: 110,375 lbs
- Total engines and reduction gears weight: 12,582 lbs
- Light displacement/installed power ratio: 39.4 lbs/hp
- Type of transmission: in line shaft

Vessel Walkthrough

The AFT DECK has a teak deck featuring a large varnished table with 6 very nice chairs as well as multi-level storage, extra power, communication and TV outlets. Teak Caprail.

The MAIN SALON features two large sofas and a large chair, all with custom fabrics, custom lamps, lighting, bookshelves and a pop-up 42" plasma TV in a rich cherry wood cabinet. Natural lighting is coming through the large aft sliding glass and stainless steel doors plus large windows to port and starboard.

Forward is the DINING SALON with a wooden oval table with seating for eight. The earth tone marble floor with granite inserts is a compliment to the rich cherry wood pass-through wall, which separates the dining area from the galley. There is ceiling spot lighting as well as a large window to starboard.

The GALLEY is located amidships to port and is fully equipped.

Further forward to port side is the PILOTHOUSE equipped with touch screen operational controls, integrated electronics including radar, computerized chart plotting, "black box" screen integration and with monitoring of two cameras on each side of the radar arch and one in the engine room from the helm.

Forward is the full width VIP STATEROOM with a double bed and bathroom ensuite.

Forward starboard is a GUEST STATEROOM with twin beds and bathroom ensuite.

Forward port is a GUEST STATEROOM with double bed and bathroom ensuite.

Amidships is the full width MASTER STATEROOM with double bed, His and Her's bathroom separated by a large 2 person (separated) shower and an office designed by Azimut that includes high and low speed internet, separate walk inn.

The CREW QUARTERS are aft and include a two-berth cabin with shower room and

head, a galley, a lounge, laundry facilities (featuring Miele dryer and Miele washer), TV and radio.

The ENGINE ROOM is aft with access from aft or forward.

The aft, port and starboard LAZARETTES can store personal watercraft or equipment. The aft part can be accessed thanks to a mechanically operated door, which when opened reveals steps to and from the aft platform.

- 2 garages with hydraulic doors.
- Hydraulic Passerelle.

The spacious FLYBRIDGE has replicated controls and electronics at the helm. There is plenty of seating, a rugged custom outfitted bimini top, a wet bar, an outdoor grill and a fridge. Starboard aft is a davit for the tender.

BOW AREA: Anchor and mooring fittings with winches and bitts concealed when not in use in 4 separated lockers one of which in the bow area; teak deck, sunning area with cushioning and glass and can holders; freshwater and fuel intake caps; two compass side doors are fitted along the walkways connecting the salon, the door to starboard for access to the helm station and the door to port for access to the galley; engine room access along the aft port side deck

Electronics and Navigational Equipment

Entertainment Equipment

- 42" plasma TV in salon
- Flat screen TV's in owner's and guest staterooms
- 2 Bose Systems in Salon and Master Bedroom
- All Rooms: Flatscreens, Radio & DVD

Electrical switchboard and plants: life on board is controlled in two different ways, with a traditional electromechanical system and with a computerized system with an operating software especially designed and created for this purpose.

Navigational Equipment

- Radar: Furuno 2115/4 BB radar: 12kW, 120 miles 4 ft antenna
- Pilothouse monitor for radar: and computer plotter, VEI 15 inch daylight with 1024 x 1288 resolution & video input
- F/B monitor for plotter: VEI 15 inch sunlight readable
- GPS plotter: VEI computer processor marinized with 100 ft RF mouse and RF keypad
- Extron VGA splitter & cables
- Bahamas, East/West Florida passport kits
- Nobletec 6.5 Nav software
- GPS sensors: Raytheon WAAS 120
- Satellite TV: KVH TVS antenna
- Sony A65 DSS receiver ir/rf, DSS receivers wired as follows:

- o MSR & VIP wired independently }
- o 2ca. Modulated to Balance of boat } = 4 total
- Matrix splitter 8 way
- ACR E.P.I.R.B.
- Channel vision modulator, 3 channels
- Satellite Phone: voice and data to 35KBPS, SeaTel Global Star 2100R with 60 ft antenna cable kit mount and F55 Inmarsat Telephone, internet, low speed and high speed,
- 80 ft low loss antenna cable 3500RG8
- Digital DA400 Cel Amp
- Phone Intercom System: Panasonic KXT 624 KSU with:
 - o 2-7030 LC D phones
 - o 4-7020 Spk phones
 - o 1-Cordless
 - o 1-Tel horn
- AC UPS 650 W all
- CCTV system to be displayed on the VEI monitors and TV systems
- Elbex EXC 97-9 Pan tilt & zoom cameras for engine room and aft deck
- Elbex EXS 128 switcher
- Elbex EXSQ 243 Quad, HMD 900 TML pigtails, TR 2420 transformer, IR remote control, video distributor, EXTD 30-4, GS 12C 12V P/S
- VHF F/B: Raymarine 215 with 8 ft 6DB Ant. & Mt.
- Raymarine LCD pilot remote model ST 600 R for P/H
- Digital Depth Speed: upgrade existing system PH
- Raymarine ST60 depth & Raymarine speed
- 24-12V 15 Amp power supply, Newmar 32-12-15

Electrical System

- 32 kW Kohler generator (2241 Hrs) New Exhaust 3/08
- 26 kW Kohler generator (2748 Hrs)

Engine /Mechanical Equipment

- 2 x 1420 hp Caterpillar 3412E diesel engines (New Exhaust 3/08)
- Manual gauges
- Central vacuum system
- Water heater
- Auxiliary handheld overboard discharge bilge system
- Watermaker SEA Recovery SRC AWC 1200, auto fresh water kit, thru hull valve & strainer (4,542 litres/1,200 US gallons per day)
- Bow thruster is extra heavy and electronically operated

Galley

- Four-burner stove
- Oven
- Microwave

- Four-door access refrigeration
- Icemaker
- Dishwasher
- Granite counter tops
- Cabinetry in rich cherry wood
- Marble floor

Laundry Room

- Miele Washing Machine
- Miele Dryer

Deck Equipment

- Passerelle (\$35,000 Option)
- Opacmare Crane 450kg for Dinghy
- Electronical / Hydraulical Swimming ladder
- Washwater electronical for Anchor flush
- Swimming Platform

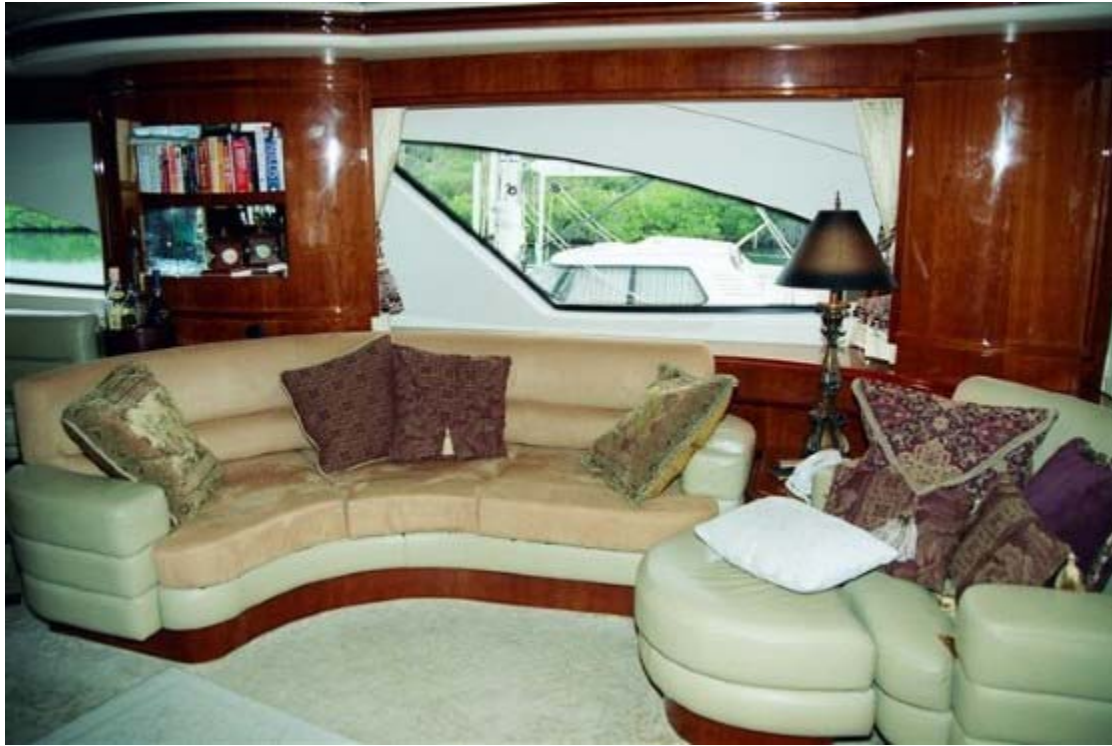
Tender

- New Novamarine Dinghy w/60 HP Yamaha Engine, Only 10 Hours & valued at \$30,000

Salon



Salon



Engine /Mechanical Equipment



Engine /Mechanical Equipment



Engine /Mechanical Equipment



Engine /Mechanical Equipment



Galley



Galley



Master Stateroom



Master Stateroom



Master Stateroom Office



Master Bath



Master Stateroom Bath



Master Stateroom Bath



Guest Stateroom



Guest Stateroom



Flybridge



Flybridge



Dining



Pilothouse



Pilothouse



Crew Quarters



Crew Quarters w/ Laundry



Profile



Profile



Forward Companionway



Forward Companionway



ABC BOATS NV
Caracasbaaiweg 202 Willemstad NA Netherlands Antilles
Phone: +5999 5234473 Email: sales@abcboatsnv.com
URL: <http://www.abcboatsnv.com>

Libro d'Oro
7/11/2009

